

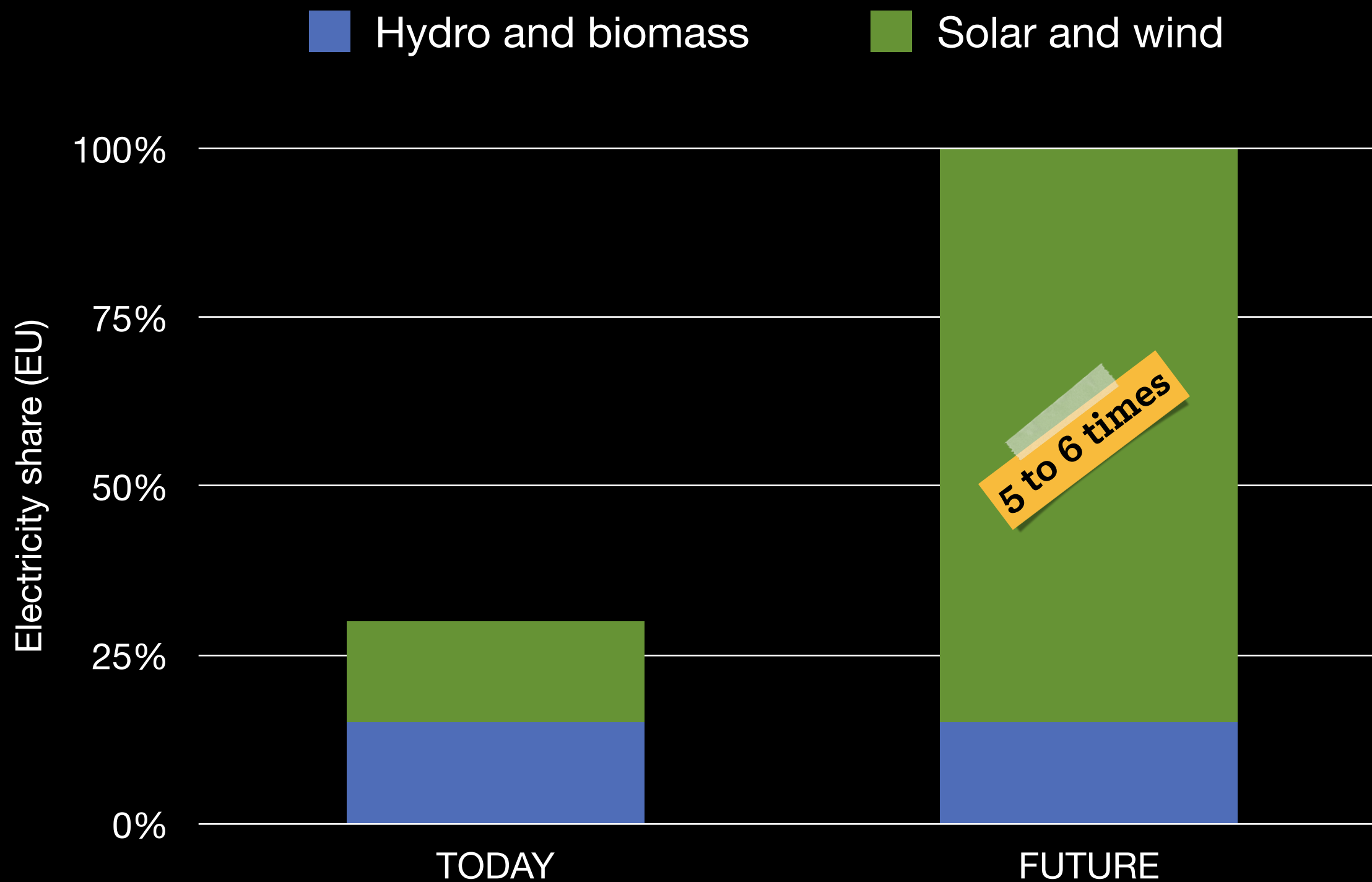
The most recent generation of spatially and temporally resolved energy system models

Key insights

Tim Tröndle

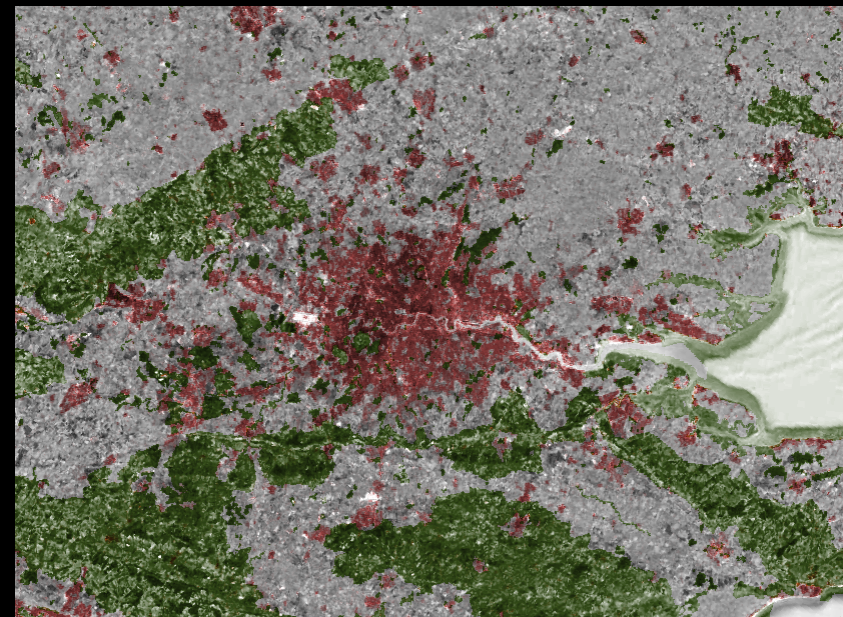
IASS
POTSDAM





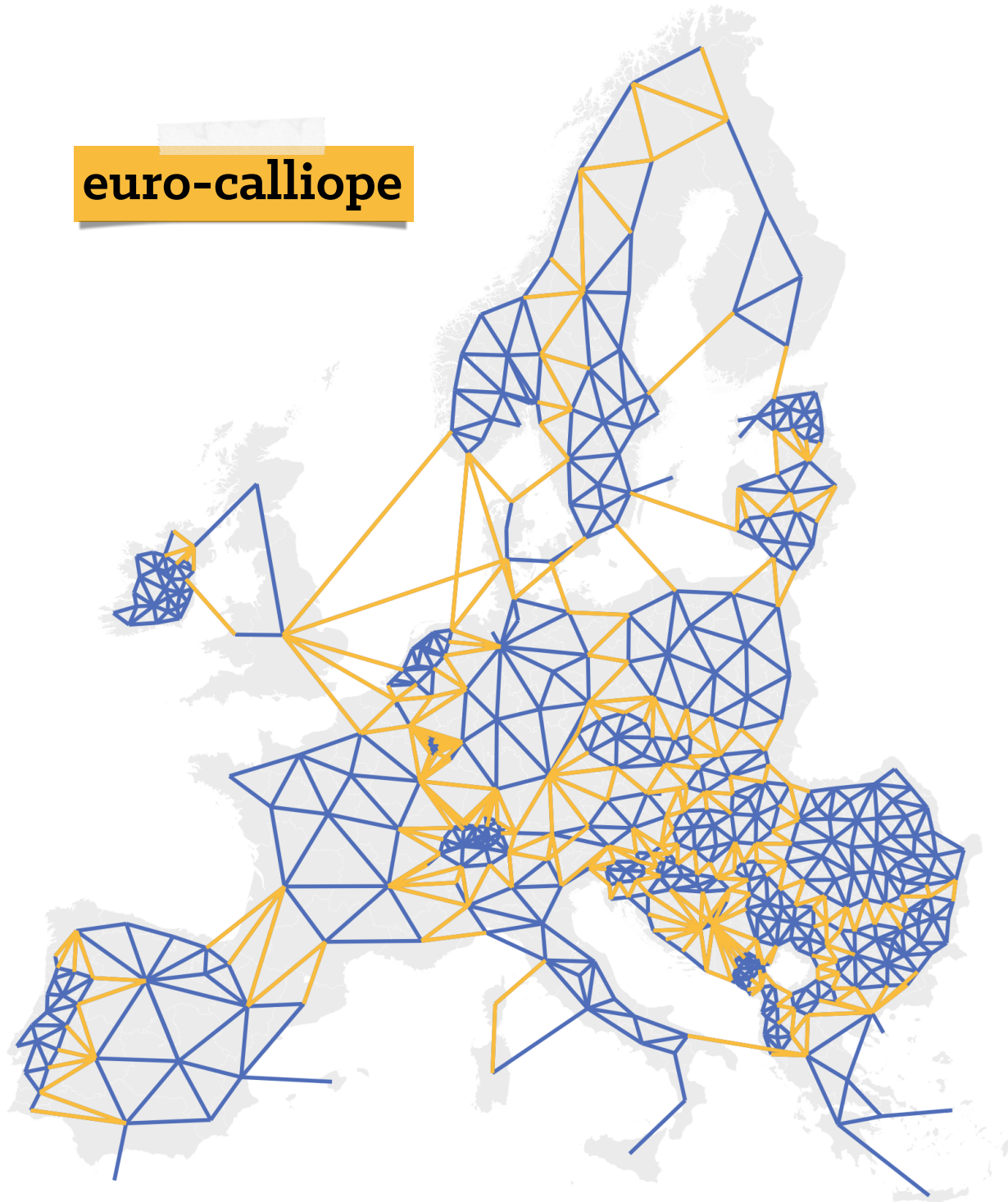
Source: Publications Office of the European Union, 2019. EU energy in figures: statistical pocketbook 2019. European Union, Luxembourg.

Where to build?



Sources: Google, GHSL JRC, IUCN

euro-calliope

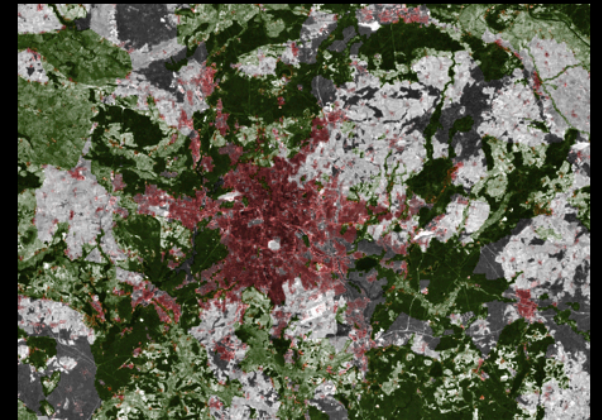
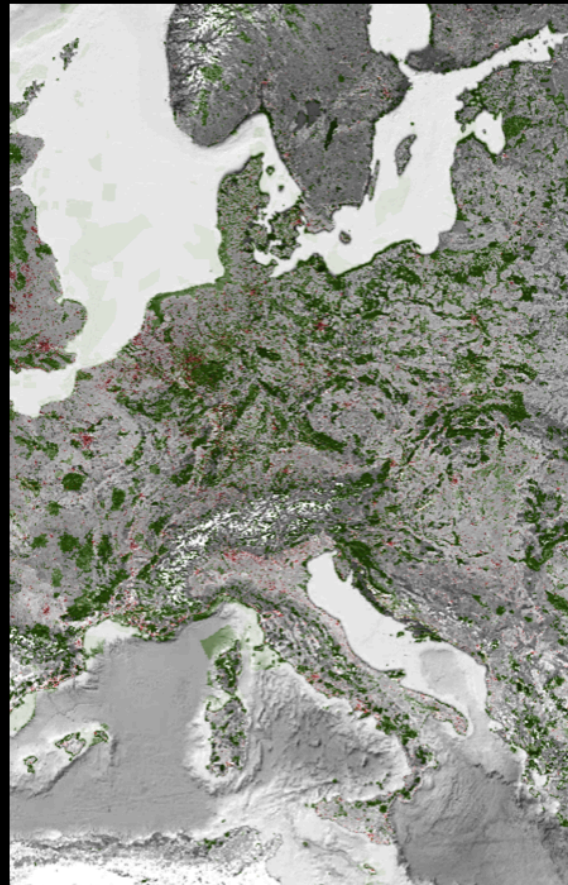


Sources: GEOSTAT, GADM

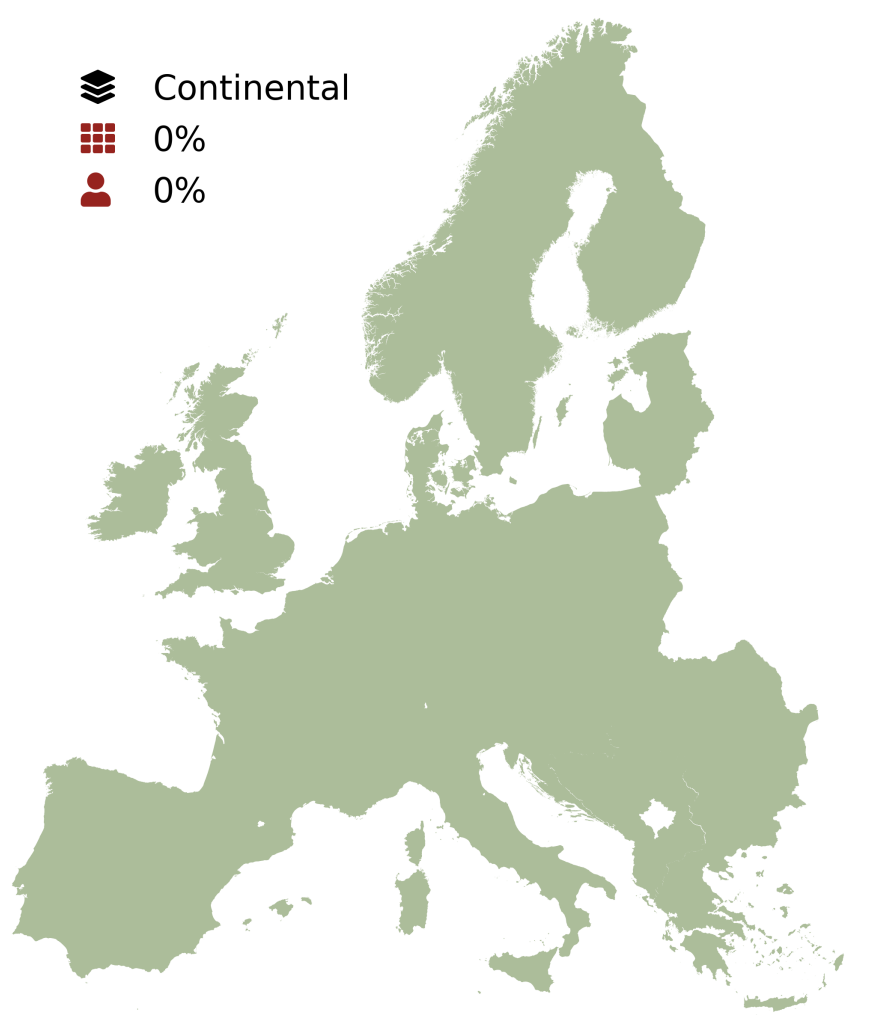
Possibility

On which geographic scales is the potential of renewable electricity in Europe large enough to satisfy annual demand?

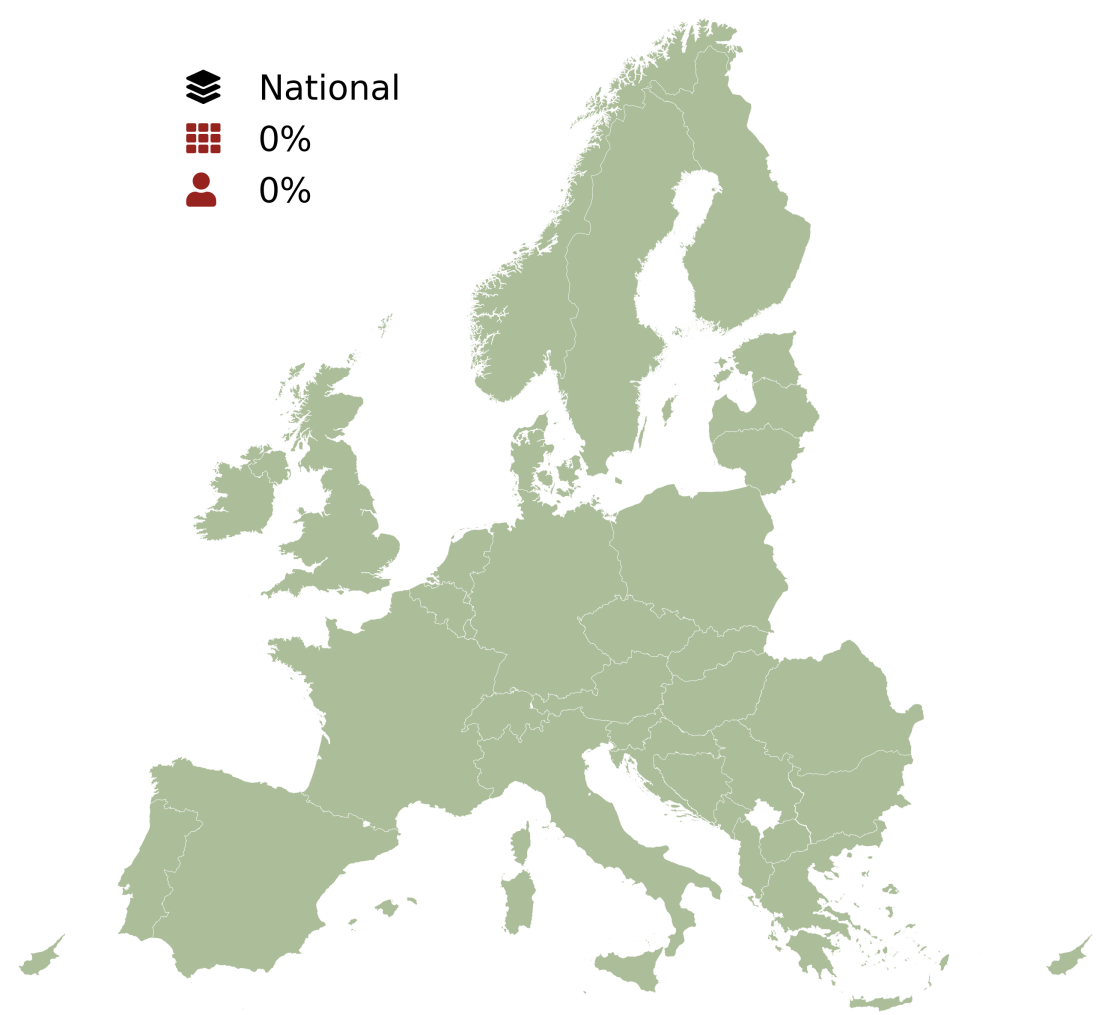
Tröndle, T., Pfenninger, S., & Lilliestam, J. (2019). Home-made or imported: On the possibility for renewable electricity autarky on all scales in Europe. Energy Strategy Reviews, 26, 100388. <https://doi.org/10.1016/j.esr.2019.100388>



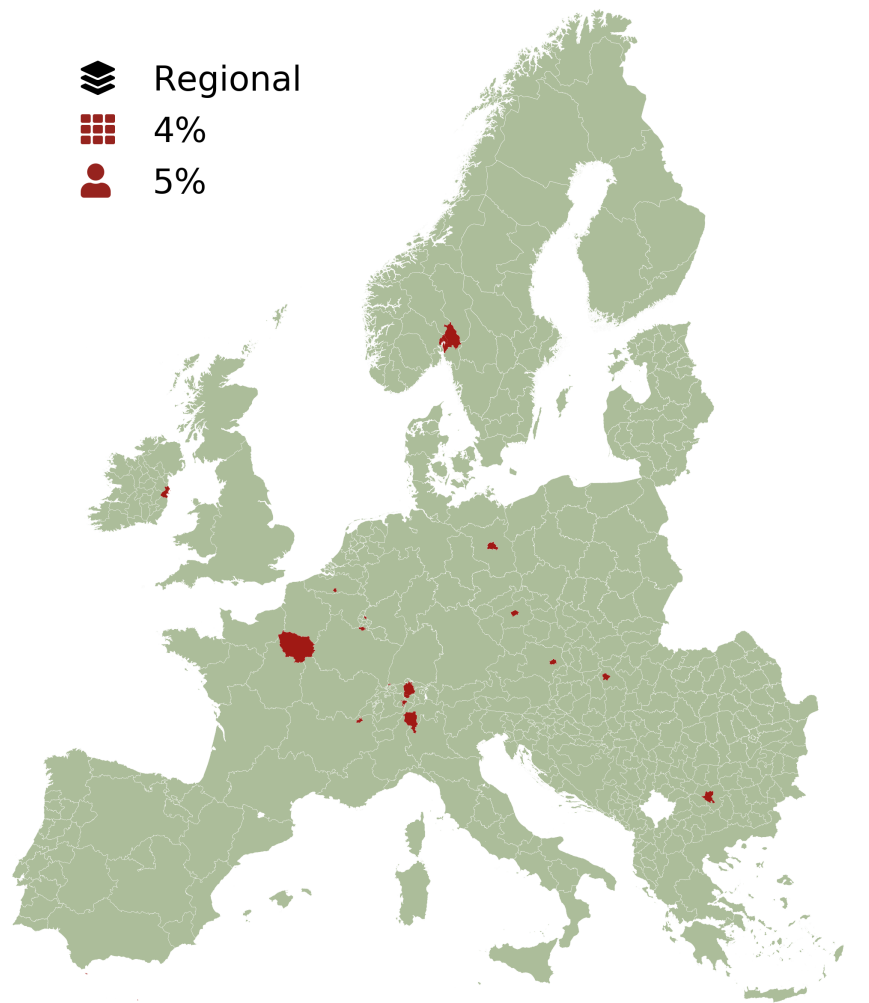
Continental
0%
0%



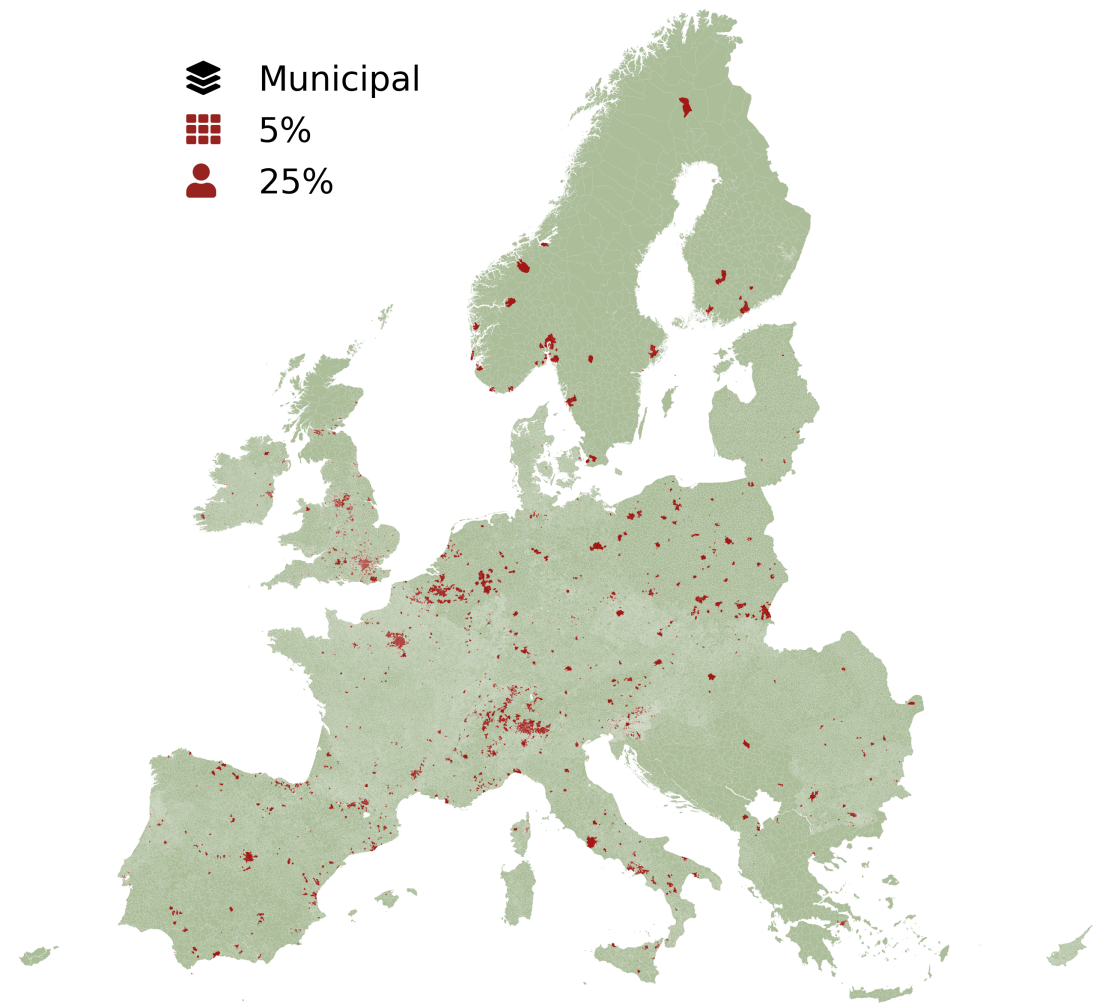
National
0%
0%

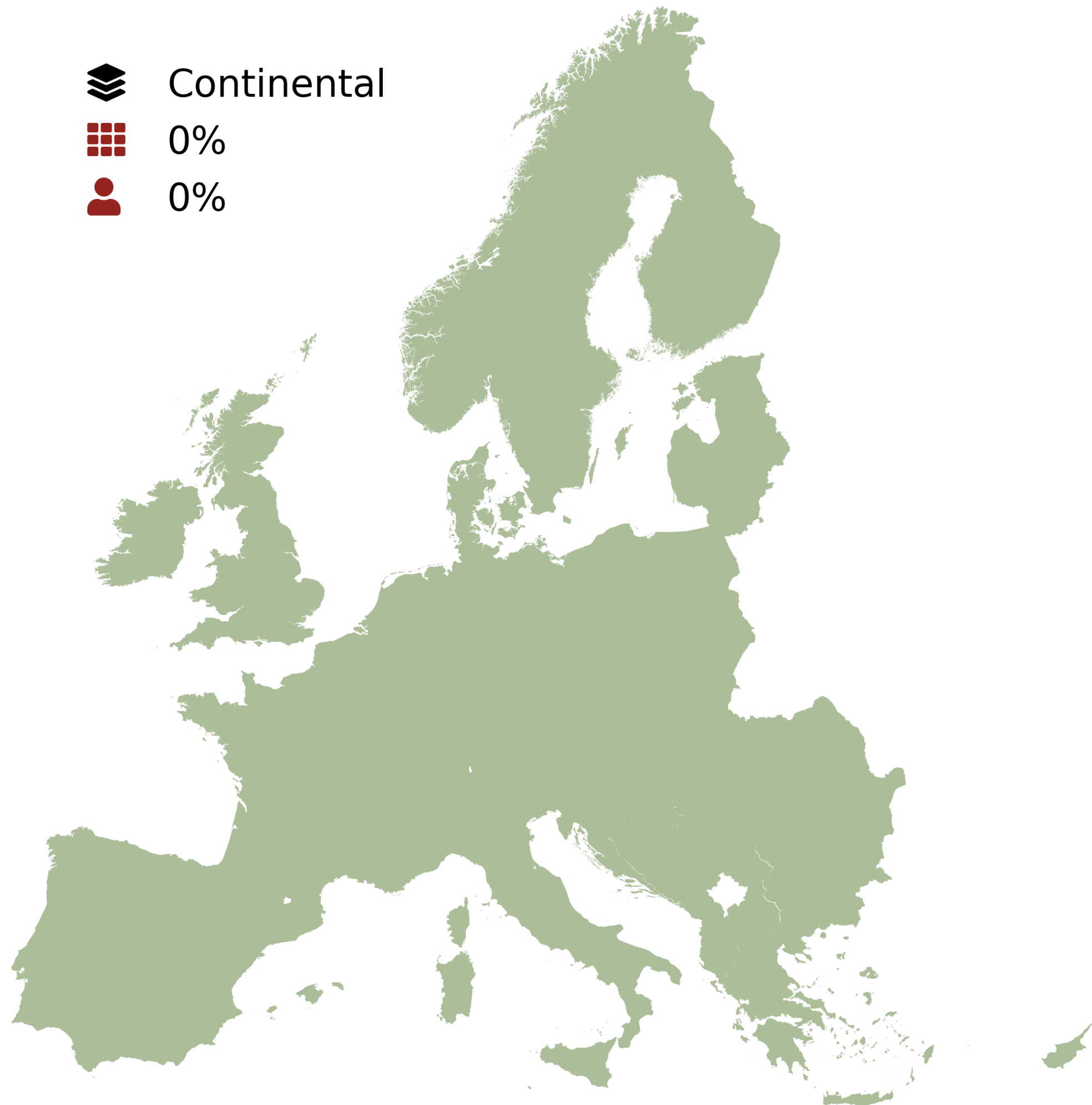


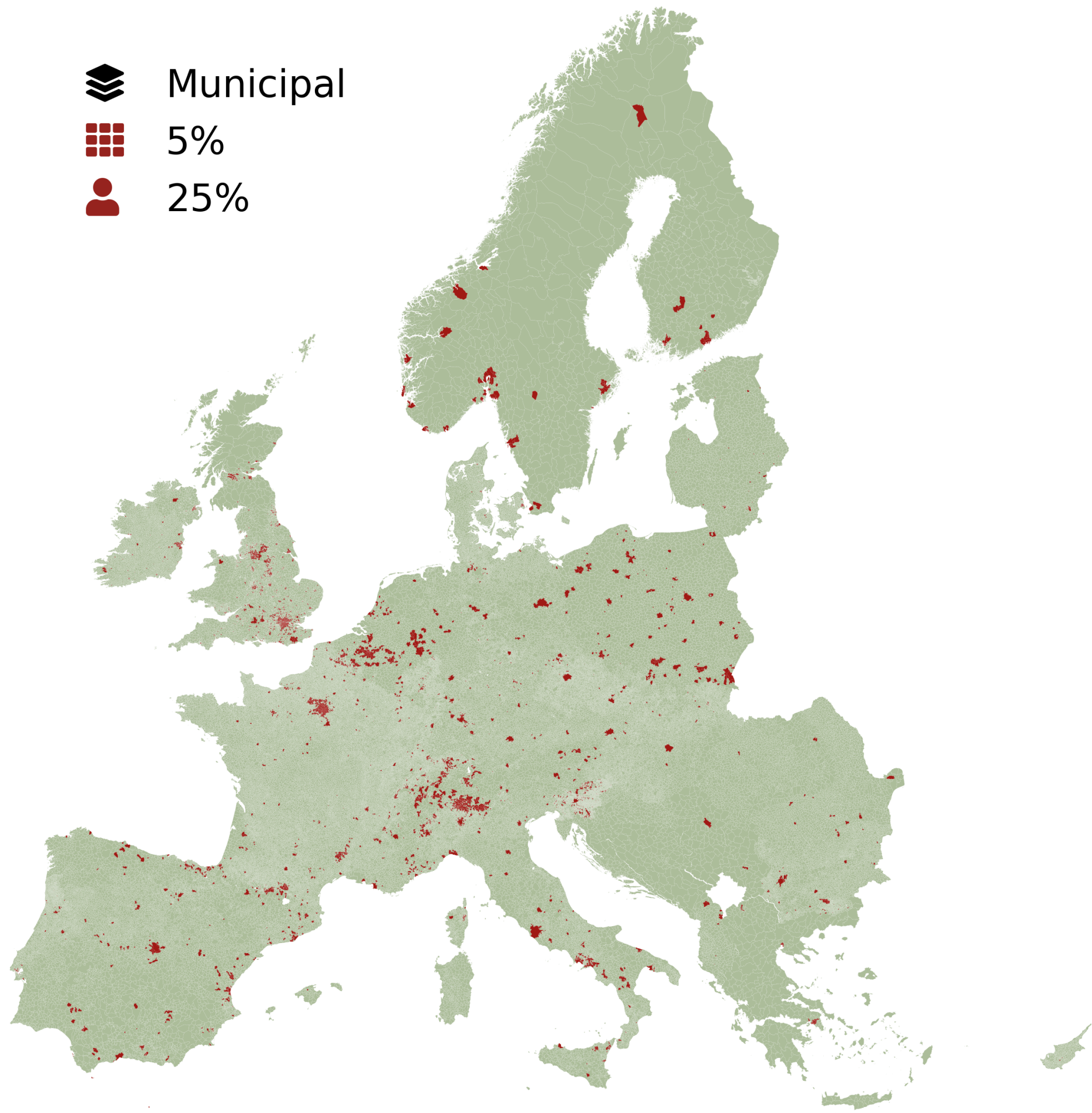
Regional
4%
5%



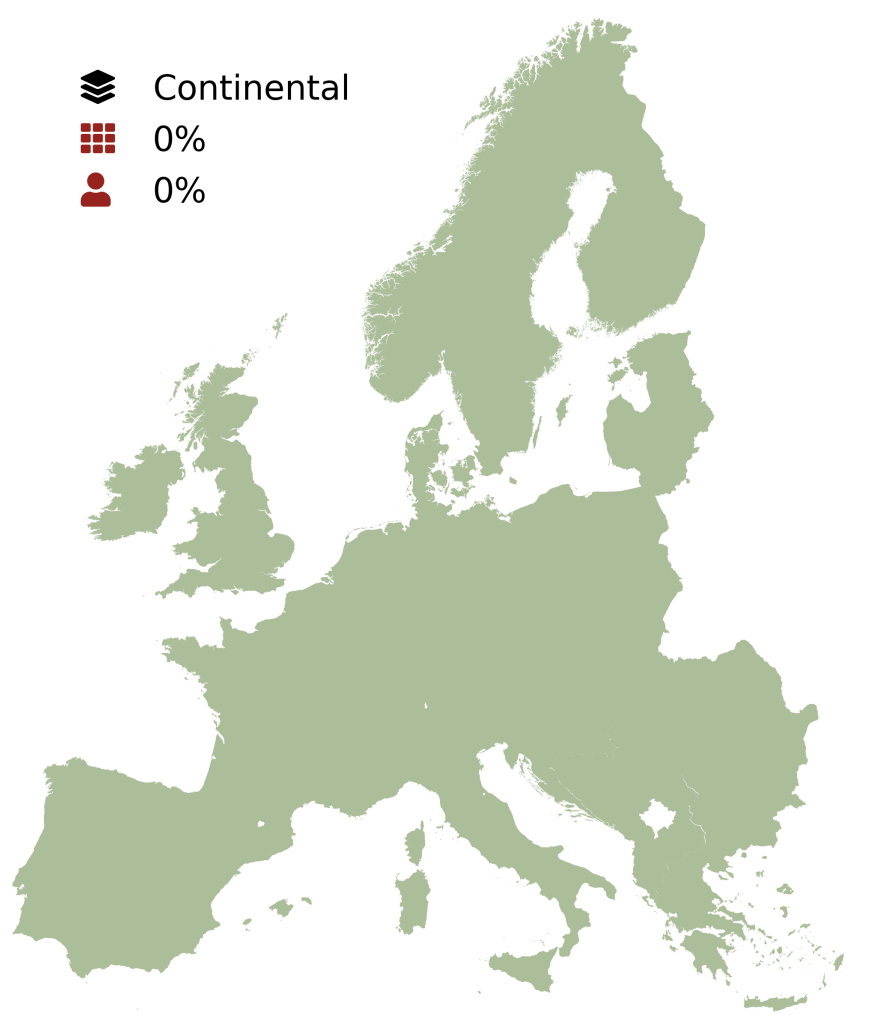
Municipal
5%
25%



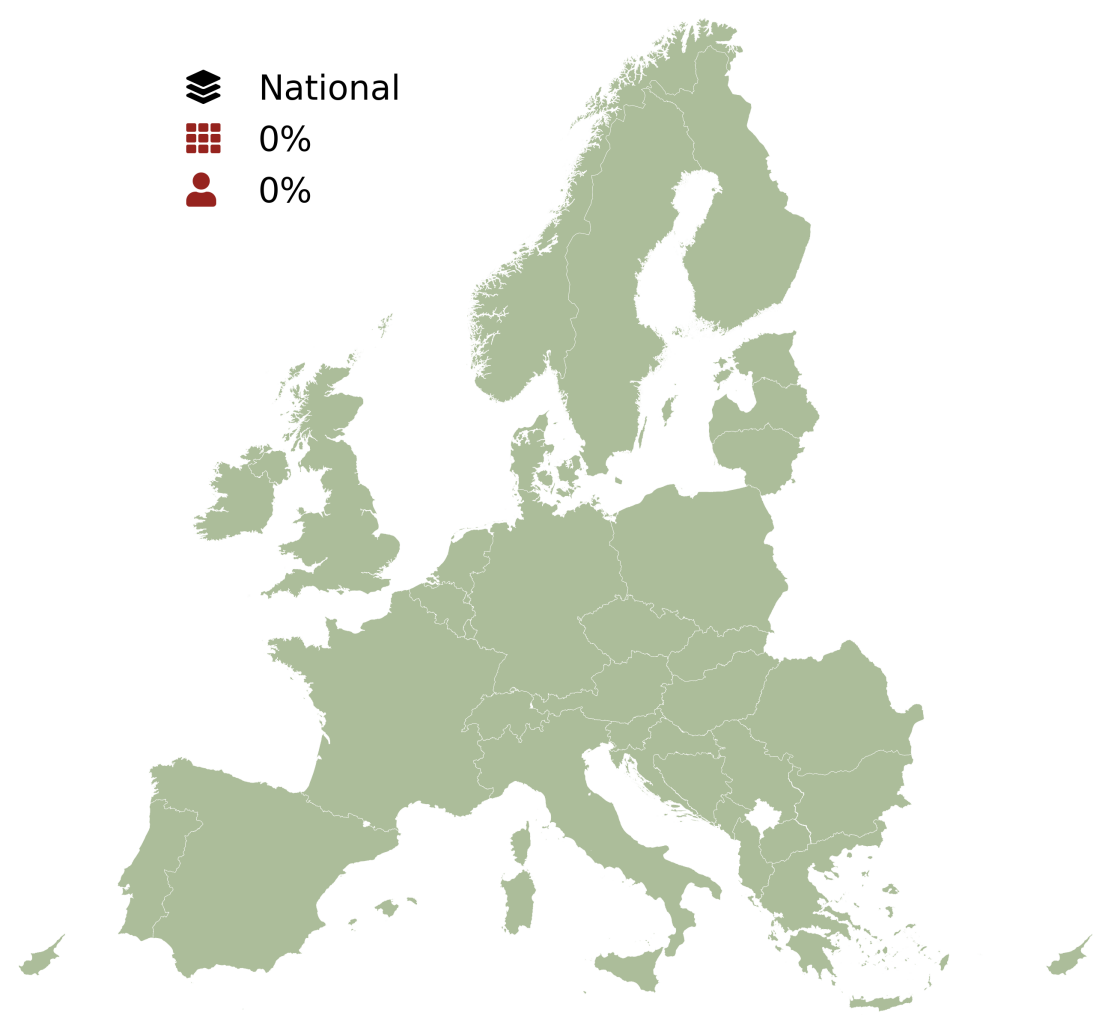




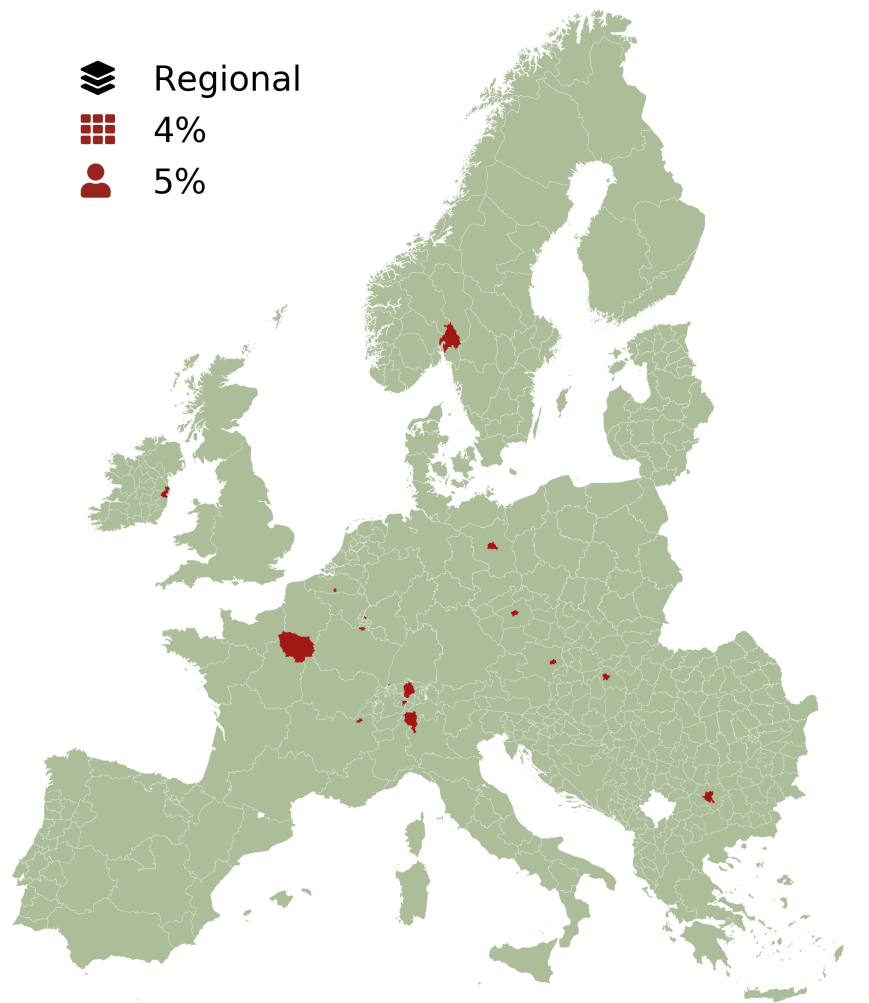
Continental
0%
0%



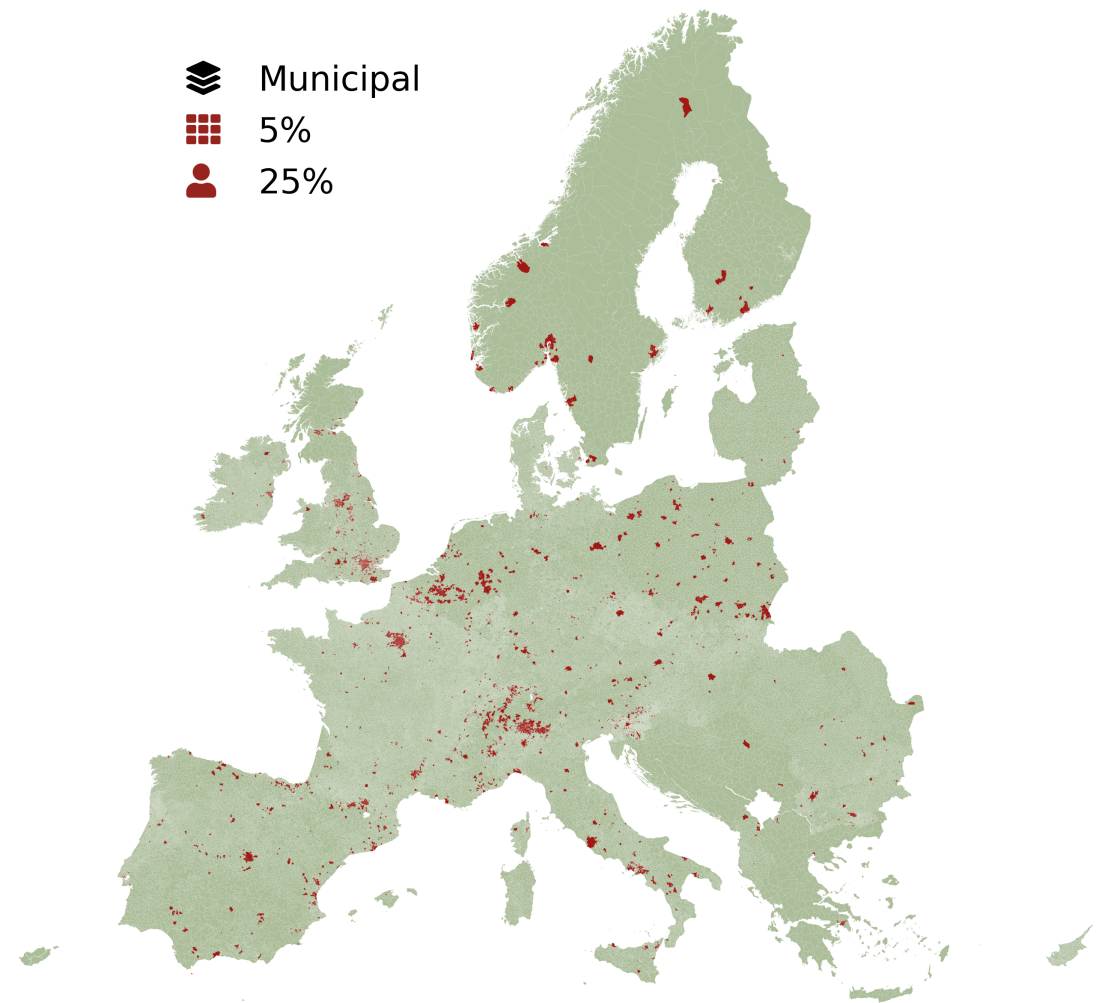
National
0%
0%

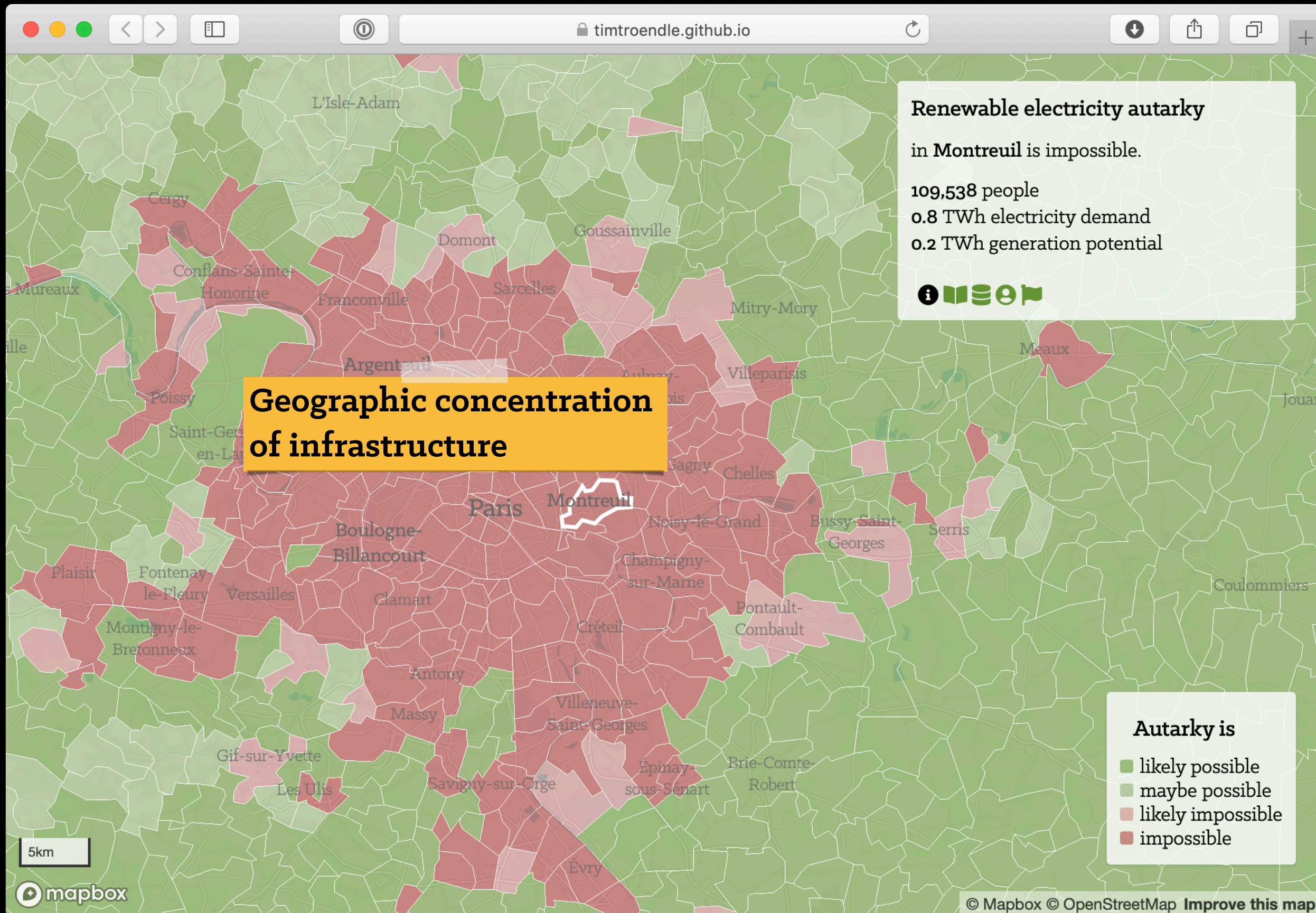


Regional
4%
5%



Municipal
5%
25%



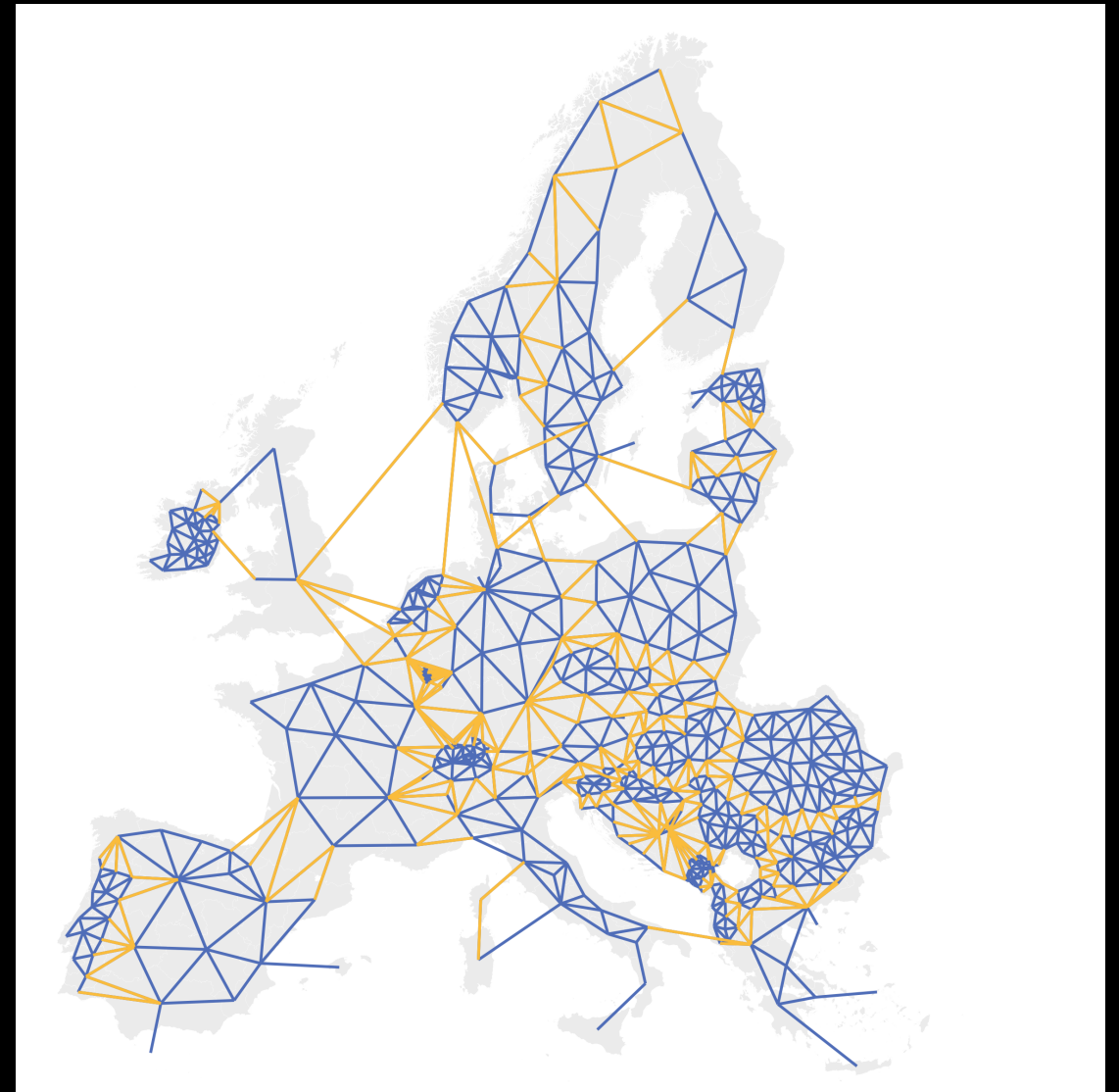


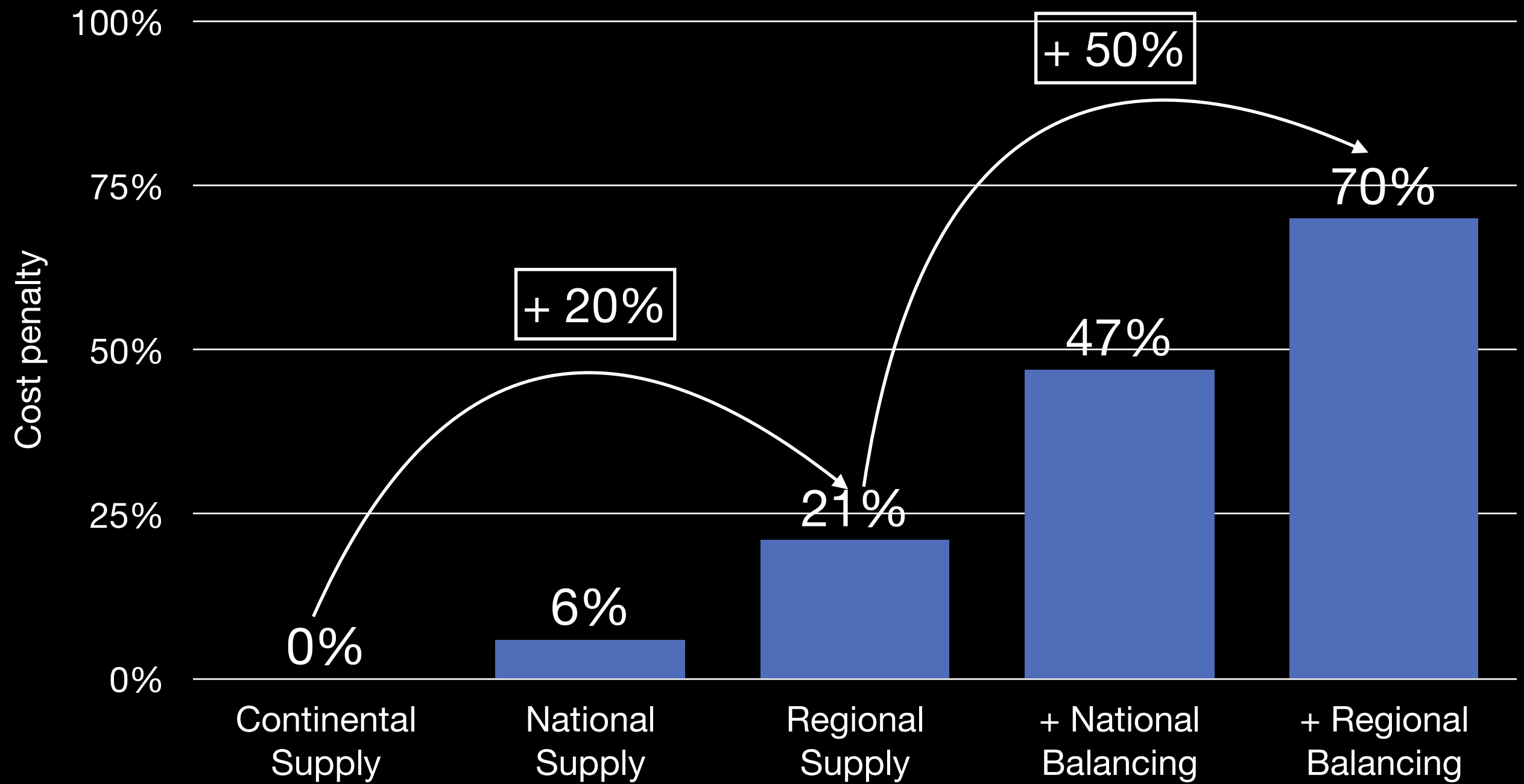
Source: <https://timtroendle.github.io/possibility-for-electricity-autarky-map/>

Cost

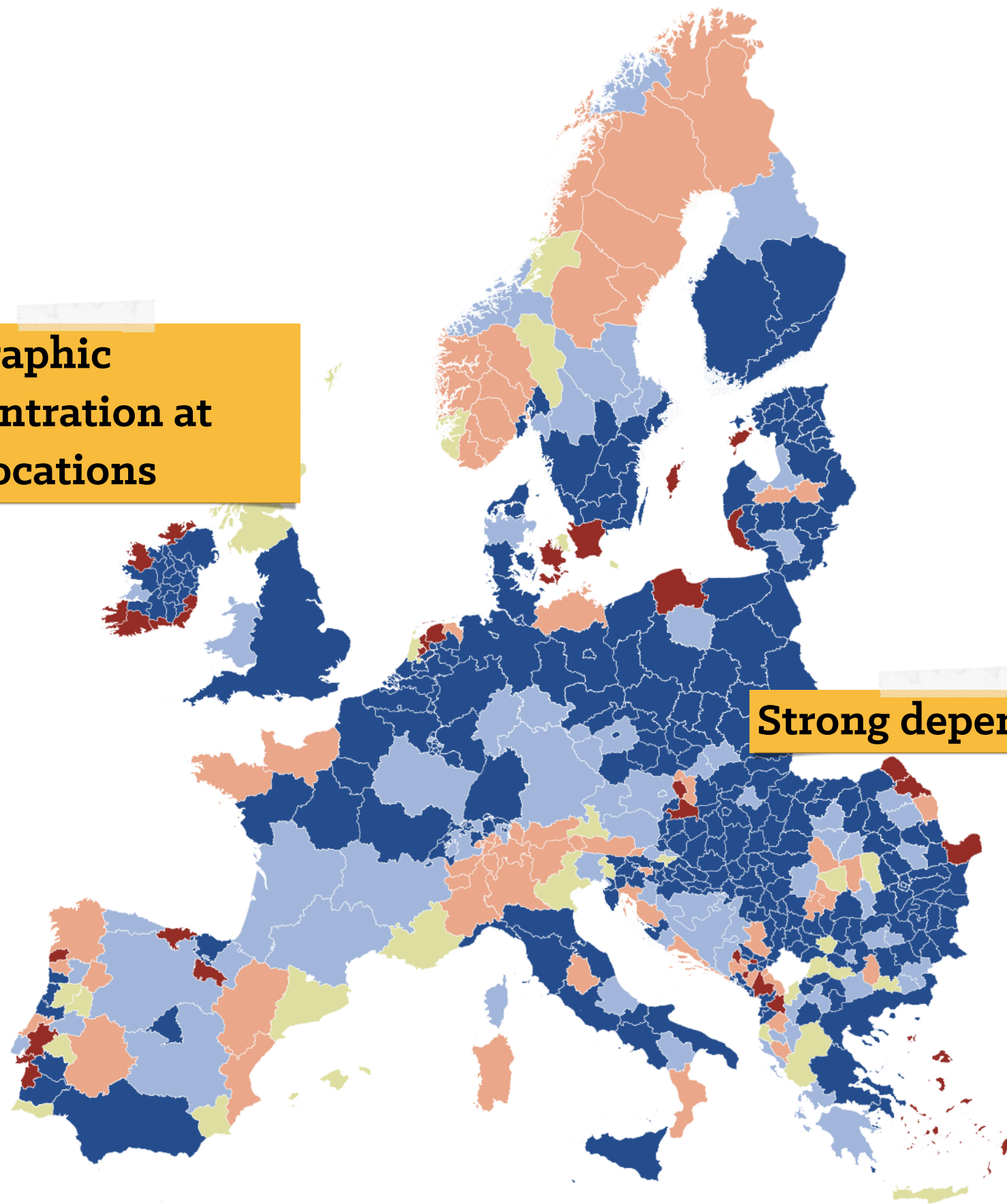
How does total system cost of fully renewable electricity supply in Europe change with geographic scale?

Tröndle, T., Lilliestam, J., Marelli, S., & Pfenninger, S. (2020). Trade-offs between geographic scale, cost, and infrastructure requirements for fully renewable electricity in Europe. *Joule*. <https://doi.org/10.1016/j.joule.2020.07.018>

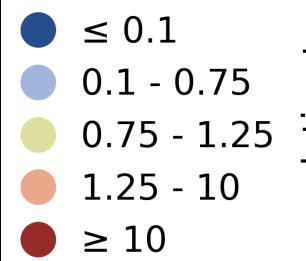




**Geographic
concentration at
best locations**



Strong dependence



Generation relative to demand

Models with high spatial and temporal resolutions

- Increase fidelity of models with high shares of renewable energy.
- Allow to assess impacts relevant to the local population by being spatially explicit.
- Future challenge: Handle model complexity.

 IASS Potsdam
 @timtroendle
 @timtroendle
 euro-calliope

Icons taken from [FontAwesome](#).

